

Limited Warranty

StarDental® Titan® Five Star Prophy Angle is warranted against defects in material and workmanship for 3 months from date of purchase. This warranty is subject to the following conditions:

The angle must not be abused and must have been operated in accordance with procedures detailed in this manual.

Any replacement parts must be genuine StarDental® parts.

Warranty validation card must be completed and returned within 15 days of purchase.

StarDental® will, without charge, repair or replace (at its sole discretion) any defective part(s) covered in this warranty, providing above conditions are met and the angle is returned through an authorized StarDental® dealer. You must have a copy of your original invoice to qualify.

THIS WARRANTY IS IN LIEU OF ALL OTHER WARRANTIES, EXPRESSED OR IMPLIED, INCLUDING THE WARRANTIES OF MERCHANTABILITY AND FITNESS FOR USE.

DentalEZ (GB) Ltd.,
Cleveland Way,
Hemel Hempstead,
HP2 7DY, ENGLAND
58952 O



Product complies
with MDD 93/42/EEC

DentalEZ Group
1816 Colonial Village Lane
Lancaster, PA 17601-5891
U.S.A.
Printed in the U.S.A.
©2007 – DentalEZ, Inc.

Titan® Five Star Prophy Angle

Instruction Manual

EFFICIENCY IN DENTISTRY®

Contents

- Specifications
- Installation and Operation
- Safety Rule
- Cleaning and Lubricating
- Sterilization
- Troubleshooting
- Cartridge Replacement
- Replacement Part Numbers
- Warranty

Specifications

Titan Five Star Prophy Angle, StarDental Titan 3 Part #263176 or Titan T Part # 263945

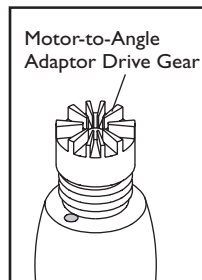
FEATURES:

- Controlled Speed Reduces Prophy Paste 'Spin-off'
- Field Replaceable Cartridge
- Quick, Easy Cleaning
- Compatible with Titan 3 and Titan T Systems
- Steam Sterilization: 135° C

Installation and Operation

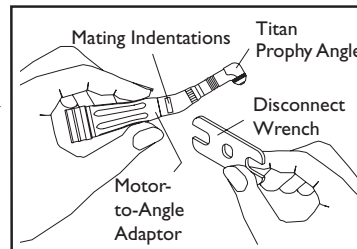
Prophy Angle Installation for Titan 3 or Titan T Systems

1. For the Titan 3 or Titan T systems thread angle onto motor-to-angle adaptor, StarDental Titan 3 Part #264073 or Titan T Part # 263970, by hand. Seat completely.



CAUTION: When angle does not seat on adaptor, gears are not meshed correctly. Remove angle; spin motor-to-angle adaptor drive gear and repeat step one.

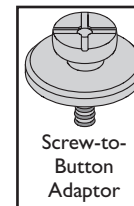
2. Fit angle disconnect wrench, StarDental Part #203048, furnished with every angle, to mating indentations on angle neck; tighten securely.



Prophy Cup Installation

The prophy angle uses either a screw-on or a snap-on type polishing cup. When using a snap-on type cup, use the screw-to-button adaptor, StarDental Part #258950.

Thread the screw-to-button adaptor, or polishing cup, with a clockwise rotation until snug into the hollow cartridge shaft of the prophy angle.



CAUTION: Operate the Titan motor in the forward direction only. If the Titan motor is operated in reverse direction, the prophy cup will separate from the motor.

Prophy Cup Removal

Unthread the adaptor, or polishing cup, counterclockwise. If the screw-to-button adaptor is difficult to disengage, remove the prophy cup, and use a small screwdriver to loosen the screw-to-button adaptor.

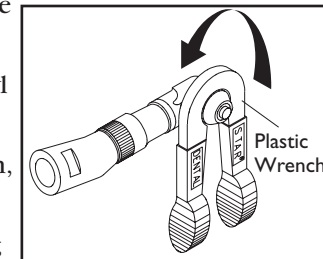
Safety Rule

PLEASE OBSERVE SAFETY RULE

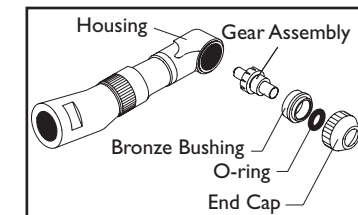
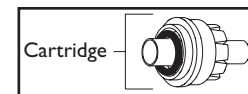
Before use, verify concentric rotation by operating the handpiece outside the oral cavity in a safe place.

Cleaning & Lubricating

1. Clean and inspect once a day.
2. Clean all external surfaces with isopropyl alcohol and a lint-free cloth or brush.
3. Use the plastic wrench, StarDental Part #258953, to unthread the end cap by turning counterclockwise. See illustration.



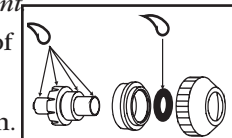
4. Remove the cartridge and inspect as follows:
5. If prophy paste is not found on the cartridge, internal cleaning is not necessary. Simply wipe off with lint-free cloth.
6. If prophy paste is found on the cartridge, clean off the paste manually. The gear assembly and end cap may be ultrasonically cleaned.



- CAUTION:** Do not ultrasonically clean any other components.
7. When prophy paste is consistently found in the cartridge, install a new bronze bushing, or a new cartridge, StarDental Part #258948, which includes the bronze bushing. Replacing the bronze bushing renews the seal and protects the gear and bearing from abrasive paste.
 8. Wipe the inside of the housing with a lint-free cloth or cotton swab.

Note: Do not immerse head in solvent.

9. After cleaning, apply one drop of Dentalube II, StarDental Part #262539, to inside diameter of O-ring and to the gear as shown.



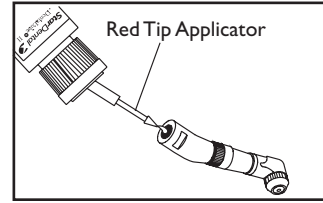
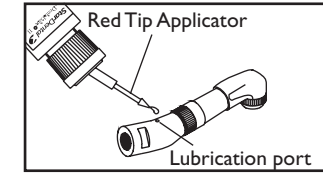
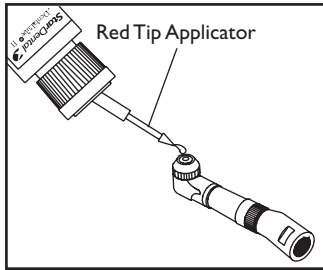
Cleaning & Lubricating (cont.)

- To reassemble, insert gear assembly into bronze bushing and guide shaft through the hole in O-ring. Install cartridge into prophy head angle.
- Turn end cap clockwise and hand tighten to secure. Use wrench to fully seat - 30° rotation maximum.

CAUTION: Do not overtighten as poor performance and damage to angle may result.

LUBRICATION

- Lubricate with DentaLube® II, StarDental® Part #262539 once a day or before each sterilization procedure.
- Remove prophy cup.
- Place a drop of DentaLube II down the center of the hollow cartridge shaft (allow a few seconds for the lubricant to drain down the shaft). See illustration.
- Place a drop of DentaLube II in the lubrication port. See illustration.
- Place a drop of DentaLube II at the base of the angle allow a few seconds for the lubricant to drain and reach the bronze bushing. See illustration.



Sterilization

- Wear puncture resistant gloves to prepare the prophy angle for sterilization.
- Remove prophy cup or screw-to-button adaptor from prophy angle.
- Clean all external surfaces with a cotton swab soaked in isopropyl alcohol.

- Dry thoroughly.
- A **wrapped** angle should be steam sterilized at 132° C for a minimum of 10 minutes or at 121° C for a minimum of 50 minutes. Do not exceed 135° C. An **unwrapped** angle should be steam sterilized at 132° C for a minimum of 8 minutes or at 121° C for a minimum of 30 minutes. Do not exceed 135° C.

Note: An unwrapped angle needs to be used immediately or sterility is not maintained.

Do not exceed the sterilizer manufacturer's guidelines for load capacity.

CAUTION: Use steam sterilization exclusively for complete sterility. Never dry heat sterilize, ultrasonically clean (*except as noted below), or expose to chemical disinfection or cold sterilization by:

- Immersion techniques or surgical milk
- Surface wipes, hand soaps, or detergents
- Surface sprays
- Sterilization bags containing disinfectants

***Note:** The gear assembly and end cap may be cleaned ultrasonically. Refer to Cleaning and Lubrication.

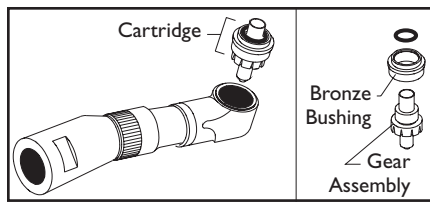
Troubleshooting

- Problem:** LOW POWER
Cause: Air leak at motor
Correction: Replace gasket; refer to Titan® Motor Instruction Manual.
- Cause:** Debris build-up
Correction: Refer to Cleaning and Lubrication.
- Cause:** Faulty angle
Correction: Replace cartridge.
- Note:** If a problem persists, contact dealer for further assistance; or, contact StarDental Technical Service at 1-866-DTE-INFO.

Cartridge Replacement

- Remove the end cap using the plastic wrench to turn it counterclockwise. See illustration, Cleaning and Lubrication.
- Pull bronze bushing to remove cartridge from prophy head as shown (see illustration). If cartridge is not removable by hand, thread a prophy cup or a screw-to-button adaptor in the cartridge and tug on it.

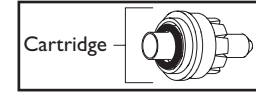
Note: Do not use pliers on the bronze bushing.



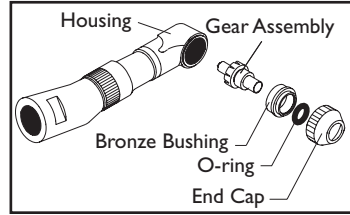
- Separate gear assembly from the bronze bushing by pulling apart as shown above.



- If gears are worn, replace cartridge, StarDental Part #258948. If not, simply wipe clean with a lint-free cloth.

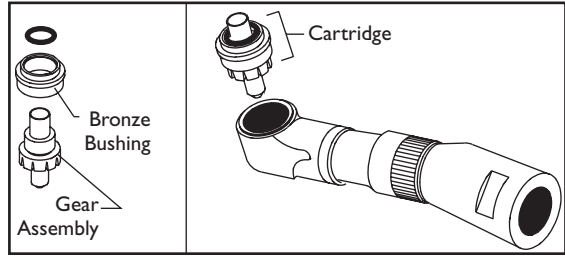


- Wipe the inside of the housing with a lint-free cloth or cotton swab.



Note: Do not immerse head in solvent.

- Guide the shaft of the gear assembly through the center of the bronze bushing as shown below. Install the assembled cartridge into the angle housing.



- Position end cap and turn clockwise. Hand tighten to secure. Use wrench to fully seat - 30° maximum.

CAUTION: Do not overtighten as poor performance and damage to angle may result.

Replacement Part Numbers

Always insist on StarDental parts for best performance.

Description	Item
Titan 3 Five Star Prophy Angle	263176
Titan T Five Star Prophy Angle	263945
Titan 3 Five Star Prophy Angle Cartridge	258948
(includes cartridge and bronze bushing with O-ring)	
Transmission Gear Assembly.....	259008
Prophy Angle End Caps (Package of 2).....	258954
Screw-to-Button Adaptor	258950
End Cap Wrench (Plastic)	258953
Angle Disconnect Wrench.....	203048
O-Rings (Package of 3)	258951
DentaLube II.....	262539
Titan 3 Motor-to-Angle Adaptor.....	264073
Titan T Motor-to-Angle Adaptor	263970

Important Notice About Returning Product To The DentalEZ Group

Anyone wishing to return any DentalEZ Group product to a DentalEZ facility MUST obtain the proper RETURN AUTHORIZATION NUMBER from the Customer Service Department. The RA Number *must* appear clearly marked on both the outside and inside of the returned product carton. When calling for a return authorization number you will be asked to provide the following information:

To Obtain A Return Authorization Number Call
1-866-DTE-INFO

- Product Name, Model Number or Part Number
- Serial Number of Product
- Dealer Return Purchase Order Number
- Reason For Return
- Copy of Invoice Showing Purchase

Items will be evaluated. Return Authorization Number is not a guarantee for credit. Your cooperation with this procedure will help us expedite processing of any returns.