

## Microlux™ Diagnostic System

Microlux Transilluminator kit: P/N 110019  
Includes 3mm black glass light guide, batteries and clip

Microlux Transilluminator kit: P/N 110026  
Includes 2mm black glass light guide, batteries and clip

Microlux & Mirror P/N 110058  
Includes 1 Fiber Optic Mirror attachment and batteries

3mm Standard Black Glass Light Guide P/N 630003

2mm Micro Tip Glass Light Guide P/N 600045

Fiber Optic Mirror Attachment P/N 640014

Microlux Protective Sleeves (Box 250) P/N 600027

Set of 3 N Size Batteries P/N 630006

LED, High Intensity P/N 630013

Endo-Lite with 5 Replacement Light Guides P/N 640035

Endo-Lite Refill Kit (Qty 25) P/N 640039

Fiber Optic Micro Mirror P/N 640028

Perio Probe with 5 replacement light guides P/N 640041

Perio Probe Refills (Qty 25) P/N 640042

### Microlux DL & Rinse

Microlux DL Kit P/N 110035  
(Includes 6 Bottles of Rinse)

Microlux DL Light Guide P/N 600053

The Microlux Transilluminator and Microlux/DL for oral cancer screening are FDA cleared

## Other AdDent Products



◀ CALSET™  
Composite Warmer  
and Anesthetic tray

TRIMAX™ ▶  
Composite  
Instrument



◀ RITE-LITE™  
Shade Matching light

MICROLUX/DL™ Kit ▶  
with 6 bottles of  
solution



◀ COMAX  
Composite Dispenser

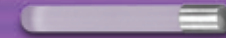


# MICROLUX™

DIAGNOSTIC SYSTEM



New Super High Intensity  
LED Technology



References: Friedman, J., Marcus, MJ: Transillumination of the Oral Cavity with use of Fiber Optics, J.A.D.A. 80: 801-809, April 1970. • Cortes, DF., Ekstrand, KR, et al: An in Vitro Comparison of the Ability of Fiber Optic Transillumination. Visual Inspection and Radiographs to Detect Occlusal Caries and Evaluate Lesion Depth, Caries Research 2000 34: 443-447. • Davies, GM., Worthington, HV., et al: British Dental Journal 191: 145-147, August 2001.

AdDent, Inc.  
43 Miry Brook Road • Danbury, CT 06810  
203-778-0200 • www.addent.com

7/09 - P/N 660041



## Transillumination Techniques:



### Microlux Transilluminator

Available with 2 & 3mm glass light guides which allows doctors to better visualize caries on anterior and posterior teeth.



### Anterior Caries

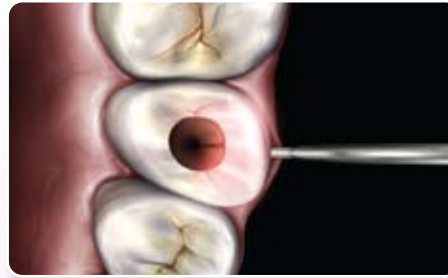
Anterior caries can be visualized by placing the probe on the labio-cervical region of the tooth and examine from the lingual.



### Posterior Caries

To visualize posterior proximal decay, place the probe on the cervical area of the tooth. Caries appear as a dark shadow on the occlusal surface.

Transillumination also helps to visualize:  
Crown Fractures, Root Canal Orifice, and Root Fractures.



### Root Fracture

Root fractures can often be detected by using the Endo Fiber tip. Place it either buccally or lingually in the gingival sulcus. A fracture line will appear dark via transillumination from the outside to the inside of the canal.



### Root Canal Orifice

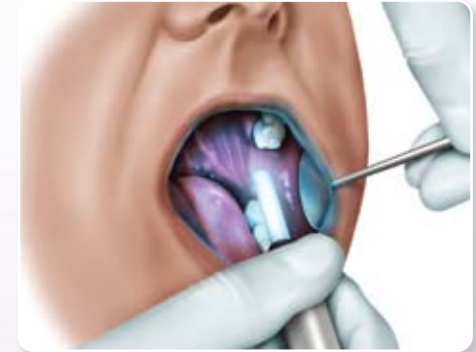
To help locate root canal orifice, place the light source on the buccal or lingual cervical region of the tooth.



### Periodontal Disease

To help detect the depth of the pockets and gingival recession, use the lighted Perio Probe and insert the tip in the gingival sulcus. The depth indications are 3, 5, and 7mm.

## Other Microlux Applications



### Oral Cancer Screening

For oral Cancer screening, have the patient rinse with 1% acetic acid and place the Microlux DL tip in mouth. Any acetowhite or leukoplakic lesions become more visible

### Advanced Features:

- Autoclaveable illuminated mirror
- Autoclaveable illuminated micro mirror
- 1 mm Endo Fiber lite with intense illumination
- .75 mm illuminated periodontal probe for easy pocket depth measurement
- Diffused DL light guide and rinse for Oral Cancer screening
- Autoclaveable 2 and 3mm glass light guide
- High output L.E.D.
- Protective Sleeves are available